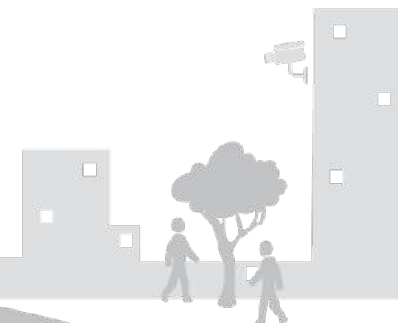
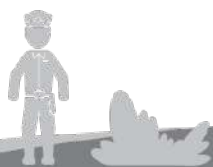


La democratización en el uso de datos y análisis del delito para la mejora de la seguridad pública: Colaboración de Seguridad Pública de Newark, Nueva Jersey, U.S.A.

Alejandro Giménez Santana, PhD

Rutgers University, EE.UU.



An aerial photograph of Newark, New Jersey, showing a mix of urban buildings and greenery. In the foreground, there are several large, modern buildings with flat roofs and glass facades, likely part of Rutgers University. The background features a dense city skyline with various skyscrapers under a clear blue sky. The lighting suggests it's either early morning or late afternoon, with long shadows and warm tones.

Supporting efforts to reduce violent crime and enhancing public safety by making data analytics and research evidence accessible to local community groups and change agents.

Newark Public Safety Collaborative (NPSC)

- The Newark Public Safety Collaborative (NPSC) was launched in 2018 to prioritize crime problems with guidance from its community partners.
- Housed in the Rutgers University - Newark School of Criminal Justice (SCJ) and convened by SCJ faculty.

Newark Public Safety Collaborative

NPSC implements this model to:

1. **Democratize** the use of data and analytics,
2. **Mobilize community resources** and expertise to problem-solve Newark's most pressing crime issues.
3. **Empower community organizations** to become **co-producers** of public safety

DICE levels the playing field by soliciting and valuing the input of those who understand the local context and have the resources to help create sustainable solutions.



DATA-INFORMED COMMUNITY ENGAGEMENT



- Convene local **community stakeholder leaders**, including **law enforcement**, to a structured public safety forum.
- Provide community agencies with direct access to **independently produced data** and **analytics** to identify **priority areas** to implement community-based responses for public safety.
- Give community stakeholders an opportunity to **address community crime problems** in a **data-informed environment**.
- Develop **strategies for crime prevention** and community change.
- Engage community agencies to become **coproducers of public safety**.

State & Local Government Agencies



Law Enforcement Agencies



Health Care Providers



Higher Education



Businesses/ Corporations



Philanthropy Orgs.



Community-Based Organizations





Conduct Problem-solving Meetings to Mobilize Community Resources

- These structured one-hour open forum meetings begin with a discussion on crime trends, changes in the spatiotemporal distribution of crime, and multiple place-based data analyses.
- A discussion follows the presentation of each crime problem to discuss potential solutions, programs, or strategies to be implemented.





Empower Youth to become Co-producers of Community Safety

- To help Newark youth become co-producers of community safety, the NPSC has partnered with the Newark Opportunity Youth Network (NOYN) in a project that seeks to engage students attending Newark's LEAD Charter school in a data-informed conversation.
- This is the second session hosted by NOYN. The NPSC team had the opportunity to engage students, provide information on current crime trends, and, more importantly, learn from their lived experiences.

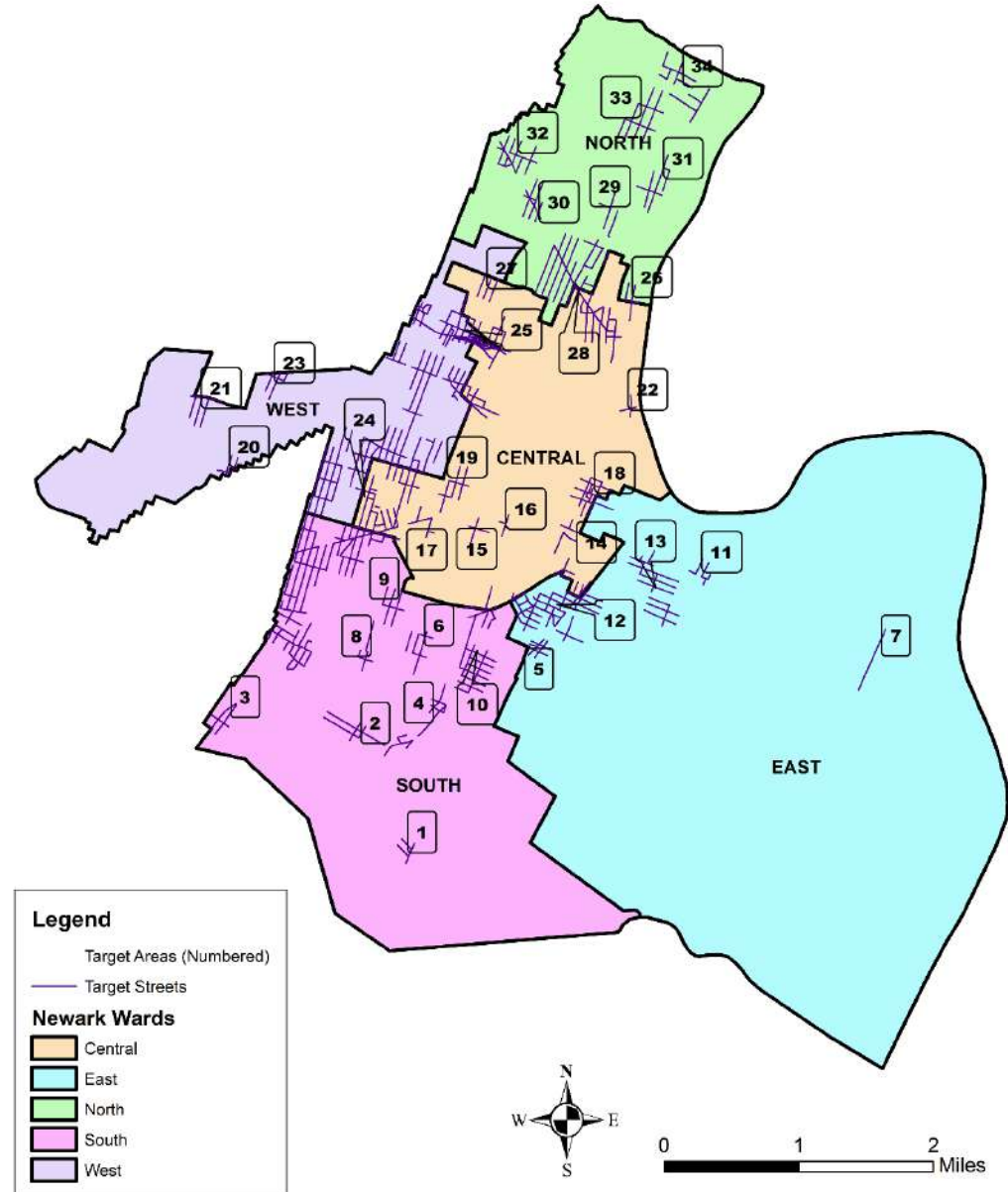


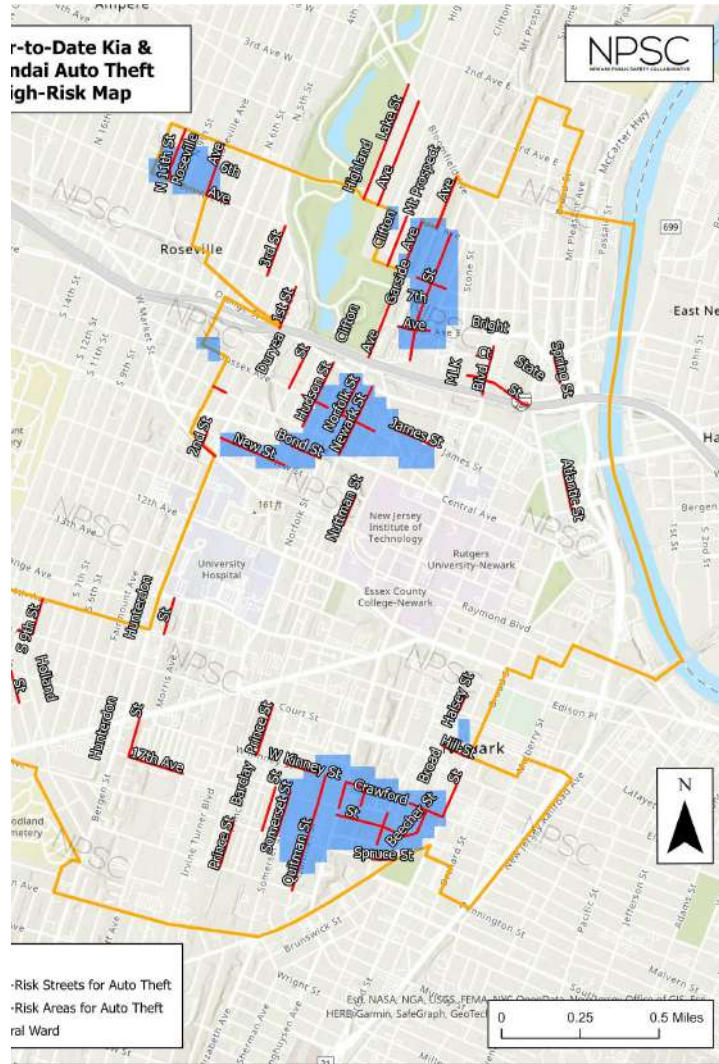
NPSC
NEWARK PUBLIC SAFETY COLLABORATIVE

PRIORITY AREAS FOR AUTO THEFT DICE CAMPAIGN IN NEWARK

Areas with a concentration of retail stores, bodegas, and grocery stores (e.g., strip malls) are at the **highest risk**.

Auto Theft Crime Reduction Campaign (Updated as of April 2021)





KIA AND HYUNDAI OWNERS PROTECT YOURSELF

To reduce Kia and Hyundai auto thefts in Lincoln Park, the NPS and LPCCD are launching an effort to inform the community. Take action to reduce your risk of becoming a victim.

Contact Hyundai (toll-free at 800-633-5151) or Kia (toll-free at 800-333-4542) to obtain a FREE theft deterrent software update.

Visit any Newark Police Precinct with proof of residency and your current vehicle registration to receive a free steering wheel lock.

Data-Informed Community Engagement effort aims to improve public safety and wellness for all Newarkers.

Auto Theft Prevention Campaign

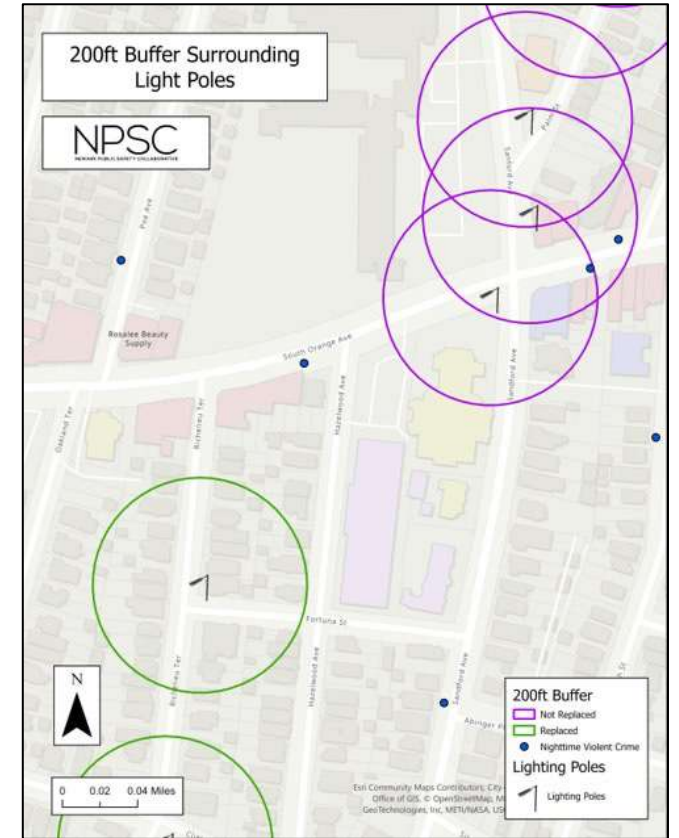
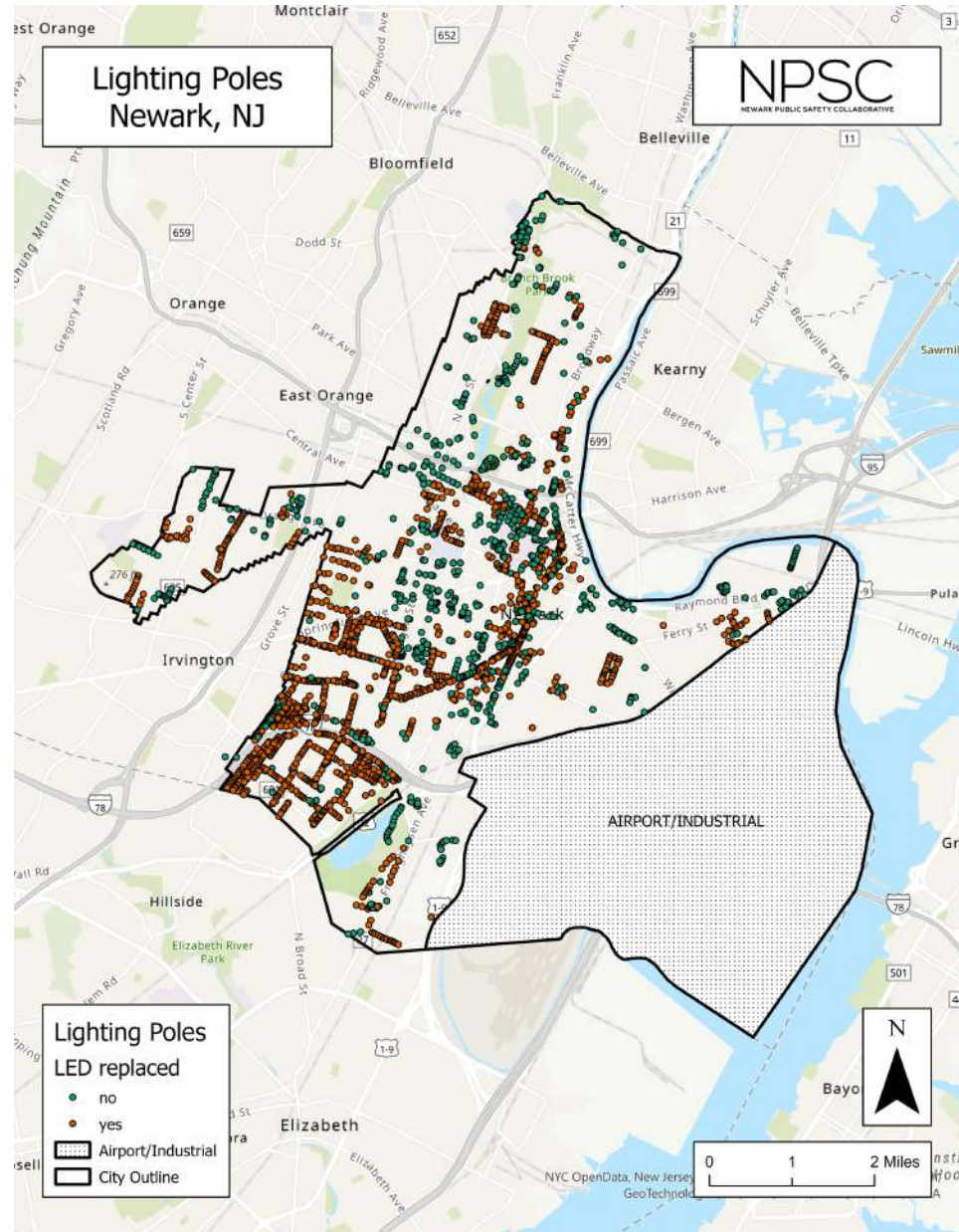
DICE CAMPAIGN TO
REDUCE ROBBERIES
NEAR ATMS





PRIORITY AREAS FOR LED LIGHTING CAMPAIGN IN NEWARK

- PSE&G launched a program to replace over 2,600 obsolete halogen lights (HPS) with new and brighter LED light installations across the City of Newark.
- That same year, NPSC partnered with PSE&G in a DICE project that sought to prioritize LED light installations in areas identified as high-risk places for violent crime victimization during nighttime hours.



A visual relationship illustrating the optical differences between an HPS cobra fixture and its LED equivalent



The effect of LED lighting on nighttime violent crime

Difference-in-Difference table (DiD)

Treatment and control group, before and after the treatment, and compute the difference between those groups to obtain the difference and difference estimator.

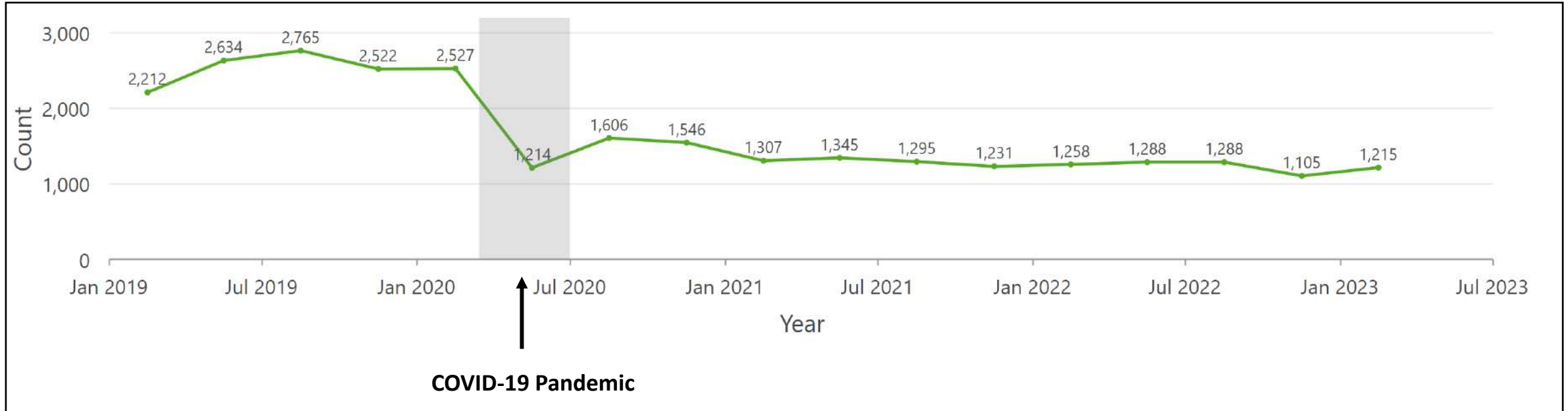
35% reduction in nighttime violent crime within proximity to new lighting poles

Variation of the total number of violent crimes (2019-2021)			
	Pre-treatment	Post-treatment	Difference
Treatment	60	39	-21
Control	26	36	10



City-Wide Arrest Report (2019-2023)

Total Arrest Counts (2019-2023)



Source: Newark Police Division

- The overall number of arrests from January 2019 to May 2023 has **decreased by 45%**.
- Arrests have continued to decrease post-pandemic with a **decrease of 25% in arrests** since the fall of 2020.

Contribuciones a la Seguridad Humana

Implementing DICE Strategies for Crime Prevention



Alejandro Giménez-Santana, PhD

Co-Executive Director, NPSC
Assistant Professor

ag903@scj.rutgers.edu

School of Criminal Justice
Rutgers University-Newark

